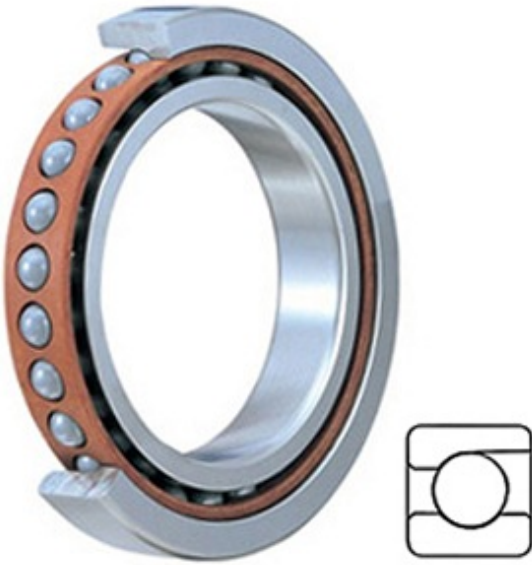




## BEARING DRIVESHAFT, INC.



71940 CDGA/P4A Bearing 2D drawings and 3D CAD models

7.874 Inch | 200 Millimeter x 11.024 Inch | 280 Millimeter x 1.496 Inch | 38 Millimeter SKF 71940 CDGA/P4A Precision Ball Bearings

Bearing No. 71940 CDGA/P4A

Category	Precision Ball Bearings
Inventory	0.0
Manufacturer Name	SKF
Minimum Buy Quantity	N/A
Weight	6.426
EAN	7316571114842
Product Group	B04270
Enclosure	Open
Precision Class	ABEC 7   ISO P4
Material - Ball	Steel
Number of Bearings	1 (Single)
Contact Angle	15 Degree
Preload	Light
Raceway Style	1 Rib Outer Ring
Cage Material	Phenolic
Rolling Element	Ball Bearing
Mounting Arrangement	Universal
Flush Ground	Yes
Inch - Metric	Metric
Other Features	Single Row   Angular Contact   High Precision
Long Description	200MM Bore; 280MM Outside Diameter; 38MM Width; Open Enclosure; ABEC 7   ISO P4 Precision; Steel Ball Material; 1



## BEARING DRIVESHAFT,INC.

	(Single) Bearings; 15 Degree Contact Angle; Phenolic Cage Material; 1 Rib Outer Ring R
Category	Precision Ball Bearings
UNSPSC	31171531
Harmonized Tariff Code	8482.10.50.28
Noun	Bearing
Keyword String	Angular Contact Ball
Manufacturer URL	<a href="http://www.skf.com">http://www.skf.com</a>
Manufacturer Item Number	71940 CDGA/P4A
Weight / LBS	14.154
B	1.496 Inch   38 Millimeter
d	7.874 Inch   200 Millimeter
D	11.024 Inch   280 Millimeter